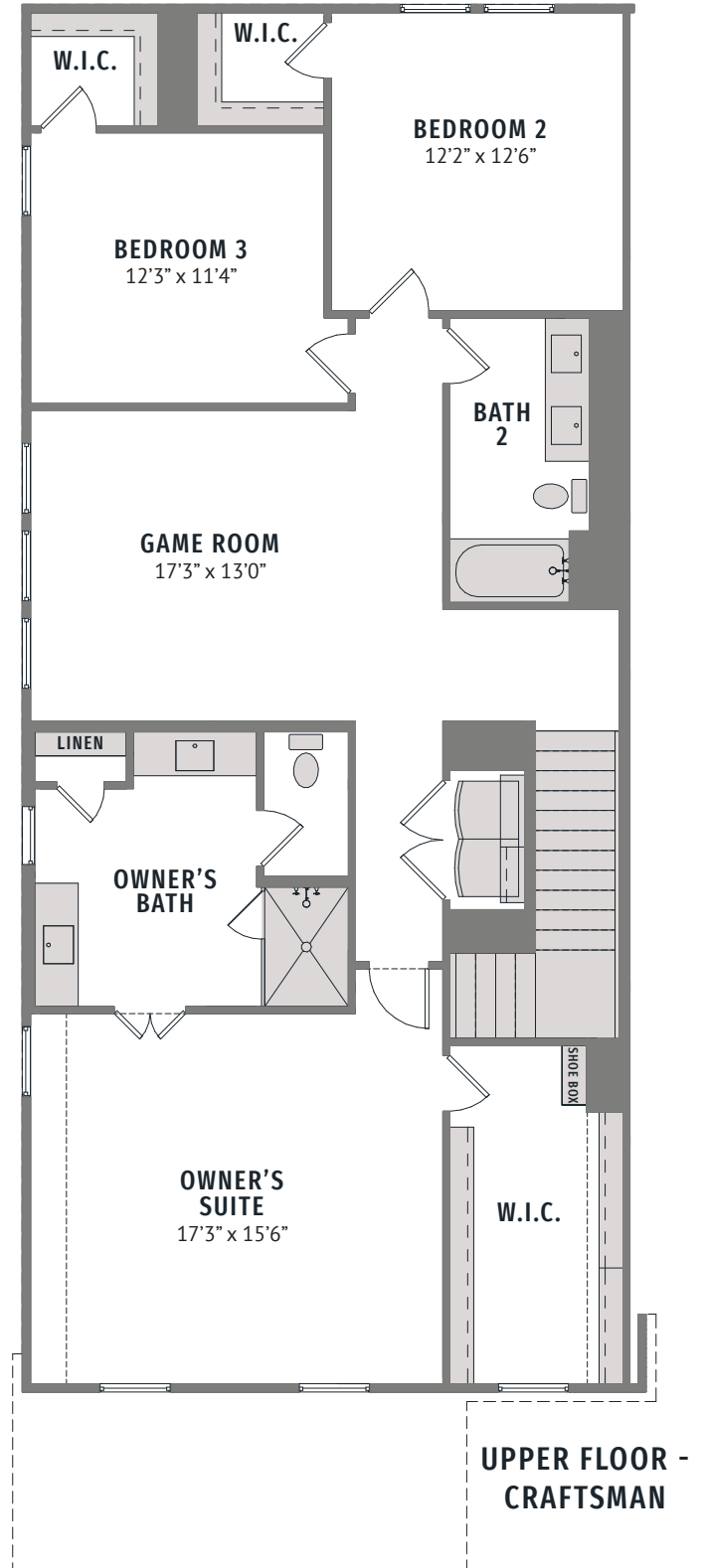
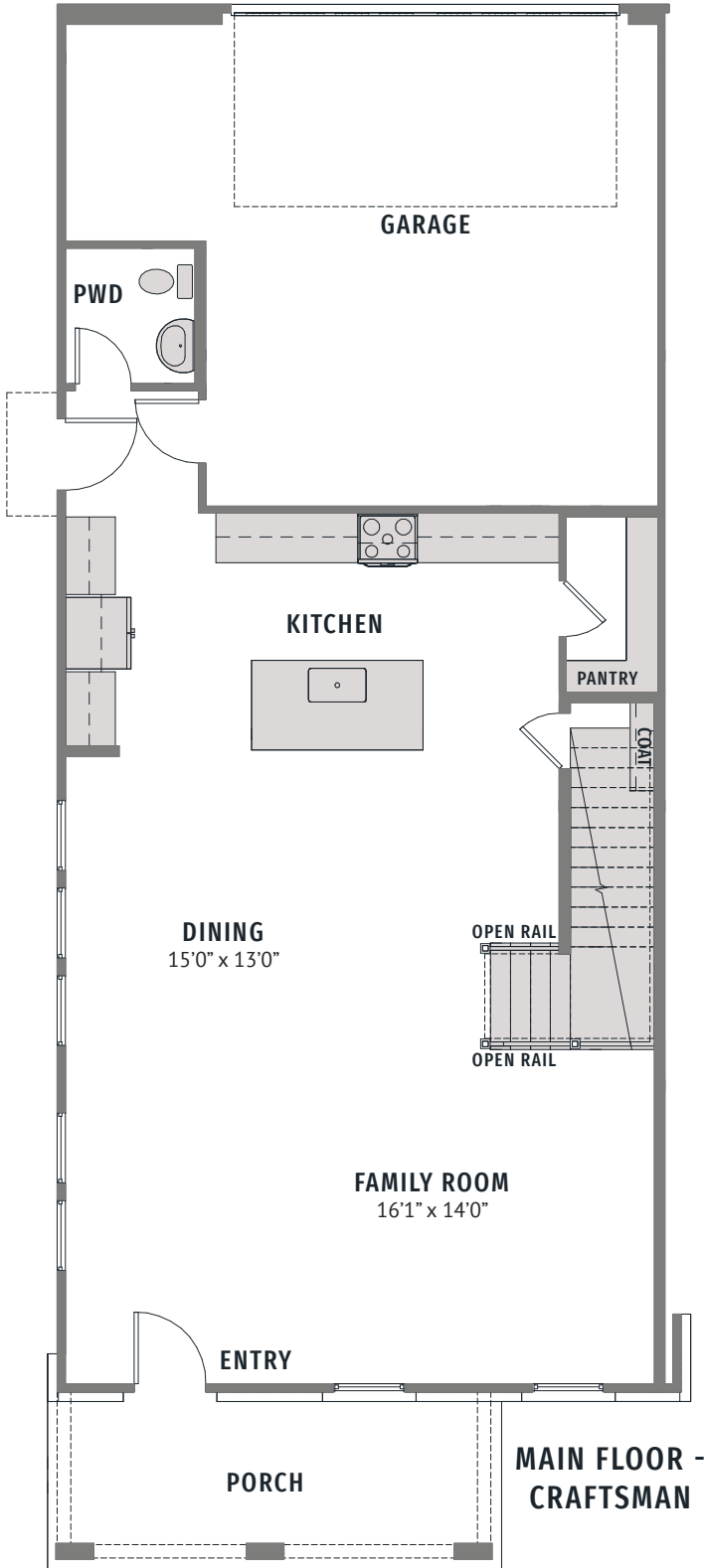


VILLAGE ON MAIN STREET

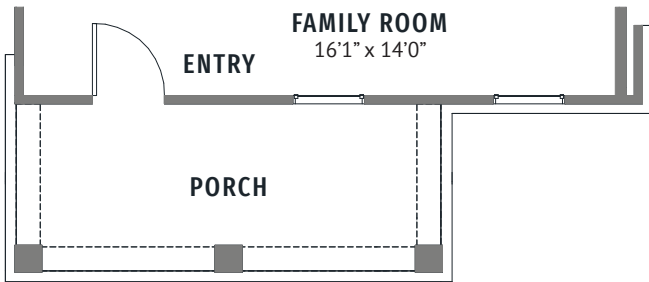
TATUM | 26' SERIES | 2,448 SQ FT | 3  | 2.5  | 2 



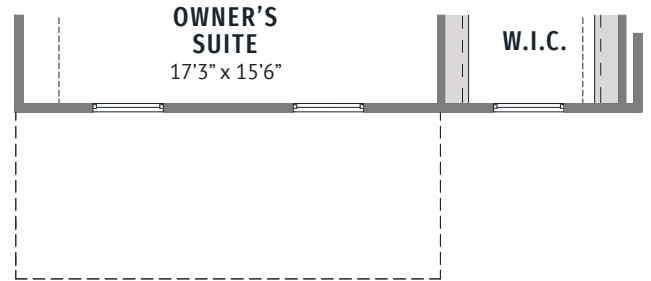
All dimensions and square footage are approximate at Village on Main and subject to change. Illustrations are artist's conception and not reproductions of original plans. The CB JENI Homes policy of continual attention to design and construction requires that specification, equipment and dimensions be subject to change without notice. Certain options can change room count. Please consult Community Sales Manager for details. 2023 © 2023 CB JENI Homes. All rights reserved. CB JENI Homes is a subsidiary of Green Brick Partners (NYSE: GRBK).

VILLAGE ON MAIN STREET

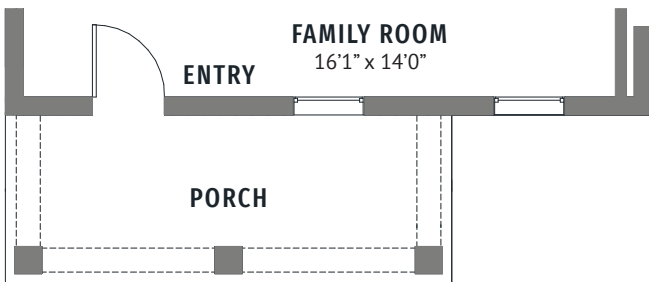
TATUM | 26' SERIES | 3  | 2.5  | 2 



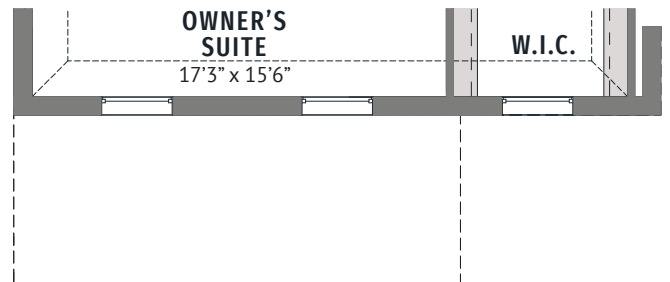
MAIN FLOOR - COLONIAL
2,448 SQ FT



UPPER FLOOR - COLONIAL
2,448 SQ FT



MAIN FLOOR - GEORGIAN
2,462 SQ FT



UPPER FLOOR - GEORGIAN
2,462 SQ FT



All dimensions and square footage are approximate at Village on Main and subject to change. Illustrations are artist's conception and not reproductions of original plans. The CB JENI Homes policy of continual attention to design and construction requires that specification, equipment and dimensions be subject to change without notice. Certain options can change room count. Please consult Community Sales Manager for details. 2023 © 2023 CB JENI Homes. All rights reserved. CB JENI Homes is a subsidiary of Green Brick Partners (NYSE: GRBK).