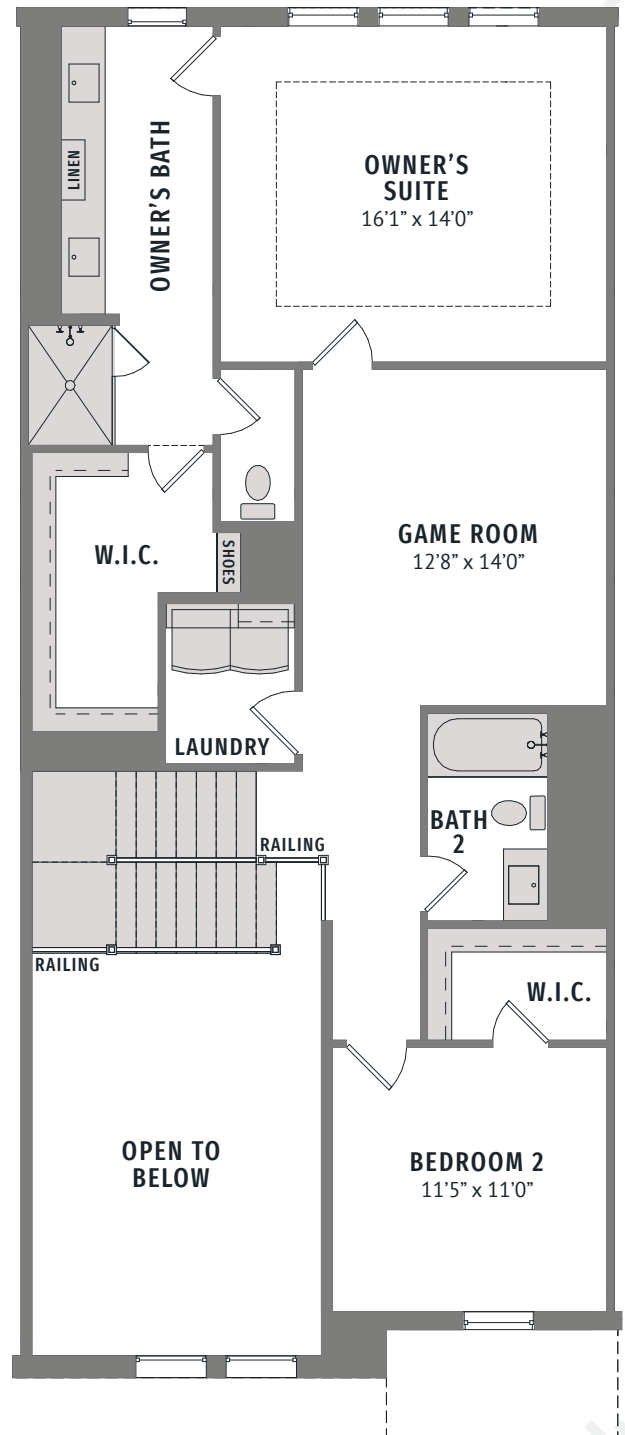


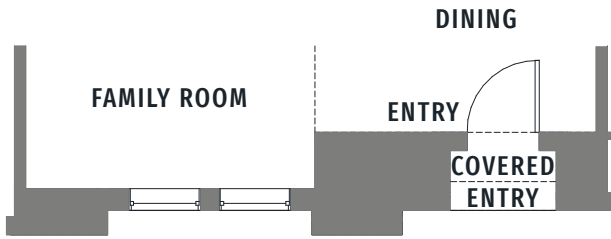
**MAIN FLOOR - TRANSITIONAL\***



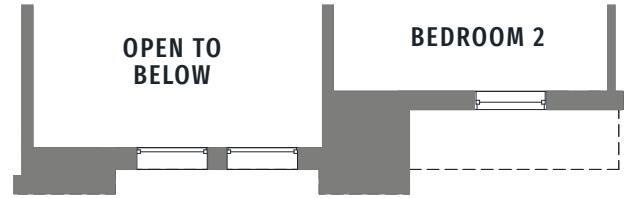
**UPPER FLOOR - TRANSITIONAL\***



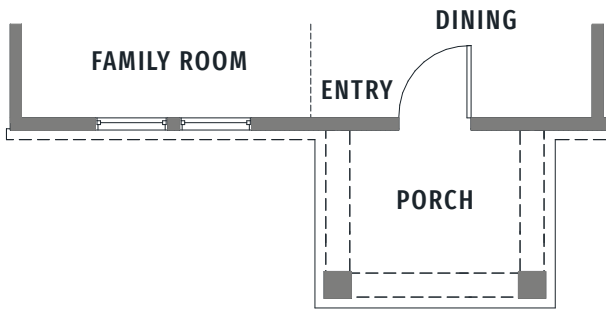
All dimensions and square footage are approximate at Hazelwood and subject to change. Illustrations are artist's conception and not reproductions of original plans. The CB JENI Homes policy of continual attention to design and construction requires that specification, equipment and dimensions be subject to change without notice. Certain options can change room count. Please consult Community Sales Manager for details. 2024 © 2024 CB JENI Homes. All rights reserved. CB JENI Homes is a subsidiary of Green Brick Partners (NYSE: GRBK).



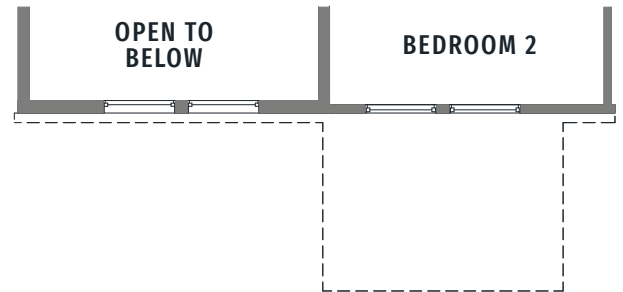
**MAIN FLOOR - MODERN**



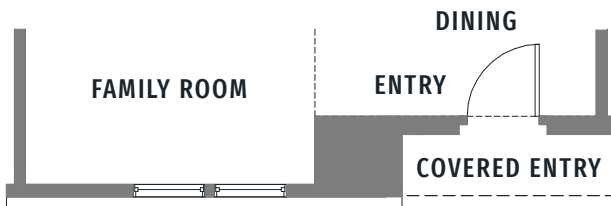
**UPPER FLOOR - MODERN**



**MAIN FLOOR - COLONIAL**



**UPPER FLOOR - COLONIAL**



**MAIN FLOOR - FARMHOUSE**



**UPPER FLOOR - FARMHOUSE**



All dimensions and square footage are approximate at Hazelwood and subject to change. Illustrations are artist's conception and not reproductions of original plans. The CB JENI Homes policy of continual attention to design and construction requires that specification, equipment and dimensions be subject to change without notice. Certain options can change room count. Please consult Community Sales Manager for details. 2024 © 2024 CB JENI Homes. All rights reserved. CB JENI Homes is a subsidiary of Green Brick Partners (NYSE: GRBK).